



Chantrey House, Belgravia
London SW1W

GARTON JONES.COM



Chantrey House, Belgravia London, SW1W

£3,150,000 Leasehold

GARTON JONES.COM

8 Gatliff Road
Grosvenor
Waterside
Chelsea
London
SW1W 8DP

Sales +44 (0) 20 7730 5007
gws@gartonjones.com
www.gartonjones.com

A spacious 3 DOUBLE BEDROOM apartment for sale of approx. 1951 sq.ft (181.25 sq.m) in Chantrey House, a small residential development in Belgravia. This impressive apartment is of a high standard and benefits from a dual aspect open plan reception room, a kitchen with a breakfast bar island and Miele integrated appliances. There is a LARGE PRIVATE BALCONY, 3 LUXURY BATHROOMS and GUEST CLOAKROOM wood flooring, air conditioning, good storage including fitted wardrobes in all bedrooms and a utility cupboard housing a washing dryer. There is underfloor heating in the bathrooms. 24 HOUR CONCIERGE. Chantrey House is a Grade II listed Edwardian property and sits within leafy Belgravia, one of the most prestigious and sought after residential areas of London. There are plenty of eateries, galleries, antiques shops and boutiques close by. Belgravia and Elizabeth Street, Knightsbridge, and Sloane Square are within easy access and Victoria Station (with Gatwick Express trains) are just a few minutes' walk.

Available via Garton Jones Chelsea & Belgravia (based on-site at Grosvenor Waterside underneath Bramah House - approx. a 10 minute walk from Chantrey House).

Service Charges: approx. £20,000.00 per annum (payable quarterly)
Ground Rent: approx. £750.00 per annum
Leasehold: commenced 24/06/2014 (expiring 20/03/2184)
EWS1 completed

EPC Rating: C (74)

Council Tax: Westminster City Council (band H).

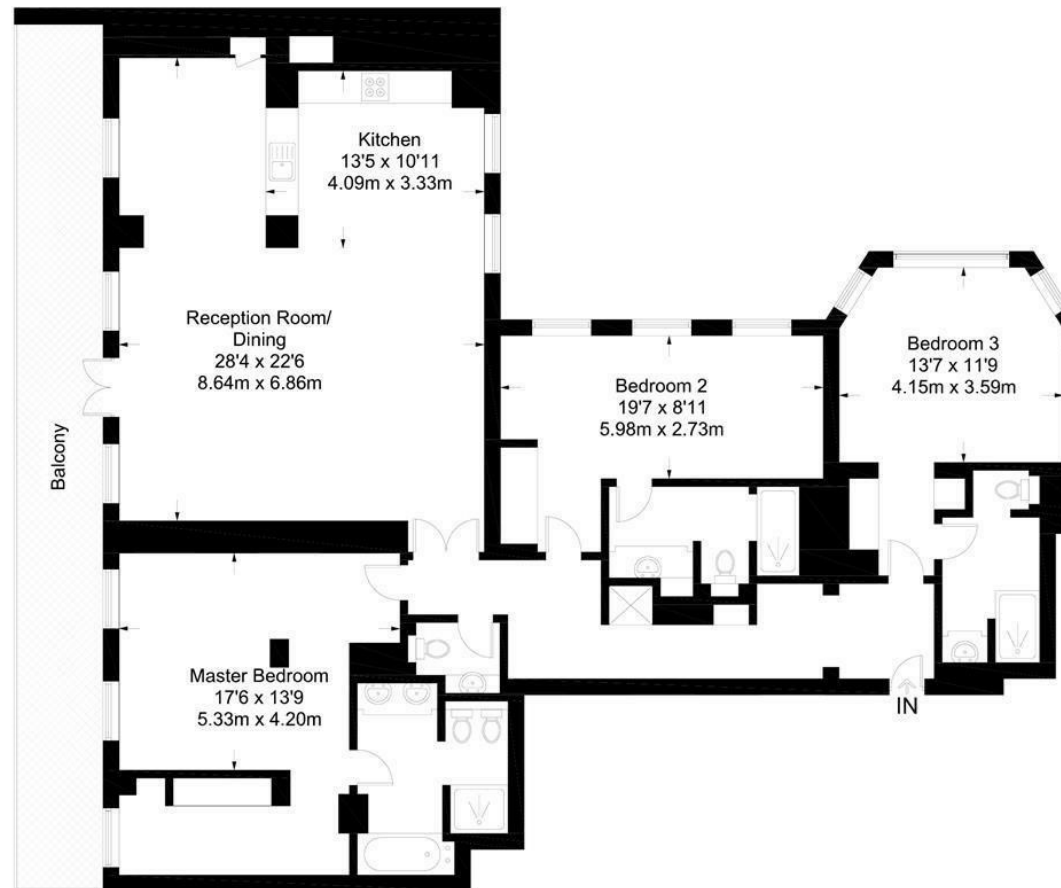
EPC certificate available on request.

- 1951 Sq.ft (181.25 Sq.m)
- 3 Double Bedrooms
- Dual Aspect Open Plan Reception Room
- Kitchen With Breakfast Bar Island & Integrated Appliances
- 3 Luxury En-Suite Bathrooms
- 24 Hour Concierge
- Guest Cloakroom
- Within Walking Distance Of Victoria Train Station
- Close To Belgravia, Elizabeth Street, Knightsbridge & Sloane Square
- Grade II Listed Edwardian Building In Prestigious Belgravia



Chantrey House

Approximate Gross Internal Area = 1951 sq ft / 181.2 sq m



Not to scale, for guidance only and must not be relied upon as a statement of fact.
All measurements and areas are approximate only and have been prepared in accordance with the current edition of the RICS Code of Measuring Practice.

